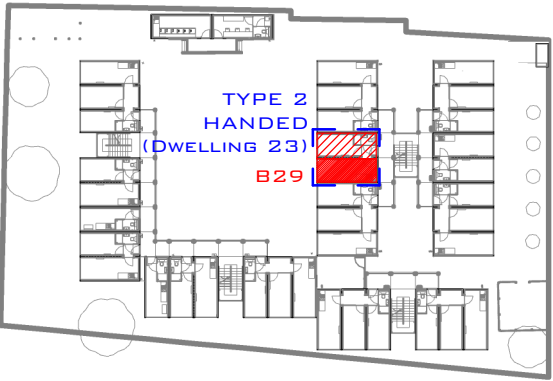


CONTAINER REF: B29 - (DWELLING 23)

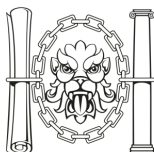
- TYPE 02 HANDED UNIT
- INTERNAL DOOR TYPE 02, LEFT HUNG, FD30
- REAR WINDOW TYPE 02, CLADDING PANEL COLOUR RAL-5005
- PARTY WALL ON LEFT HAND
- KITCHEN RIGHT HAND SINK
- FRONT AND REAR OF CONTAINER AND ALL STEEL PLATES TO BE PAINTED RAL 7016, ANTHRACITE GREY
- INTERNAL WELDED PLATES AND CAPTIVE NUTS TO TAKE WALKWAY BRACKET TO FRONT ELEVATION
- REFER TO ELEVATIONS FOR CUT OUT DIMENSIONS
- THESE DRAWINGS ARE TO SHOW THE UNIT TYPE POSITION AND ANY INDIVIDUAL ITEMS. THESE ARE NOT TO BE USED FOR CONSTRUCTION. FOR CONSTRUCTION DETAILS PLEASE SEE THE RELEVANT PLANS, SECTIONS AND DETAILS.

--- . --- PARTY WALL SIDE



THIRD FLOOR
BLOCK B

A	02.10.17	HOB HANDED	RS	RS	RS
REV	DATE	REVISION	DRAWN	CHECKED	APPROVED
CONSTRUCTION					

SCALE: NOT TO BE SCALED	CLIENT: CARGOTEK	PROJECT: HOPE GARDENS	TITLE: B29 UNIT DATA SHEET - TYPE 02 HANDED -THIRD FLOOR - BLOCK B	<div>CITYZEN</div> <div>ARCHITECTURE ENVIRONMENT</div> <div>MARITIME HOUSE BASIN ROAD NORTH HOVE EAST SUSSEX BN41 1WR</div> <div>CONTACT@CITYZENDESIGN.CO.UK WWW.CITYZENDESIGN.CO.UK 01273 704 901</div> <div> Chartered Institute of Architectural Technologists Registered Practice</div>	
	DESIGNER: ROMAN SCHNECKER	©COPYRIGHT CITYZEN LIMITED		DATE: 27.07.17	DRAWING: PROJECT REF - DRG NO. (REVISION) 1705 - CR - 1329 - (A)